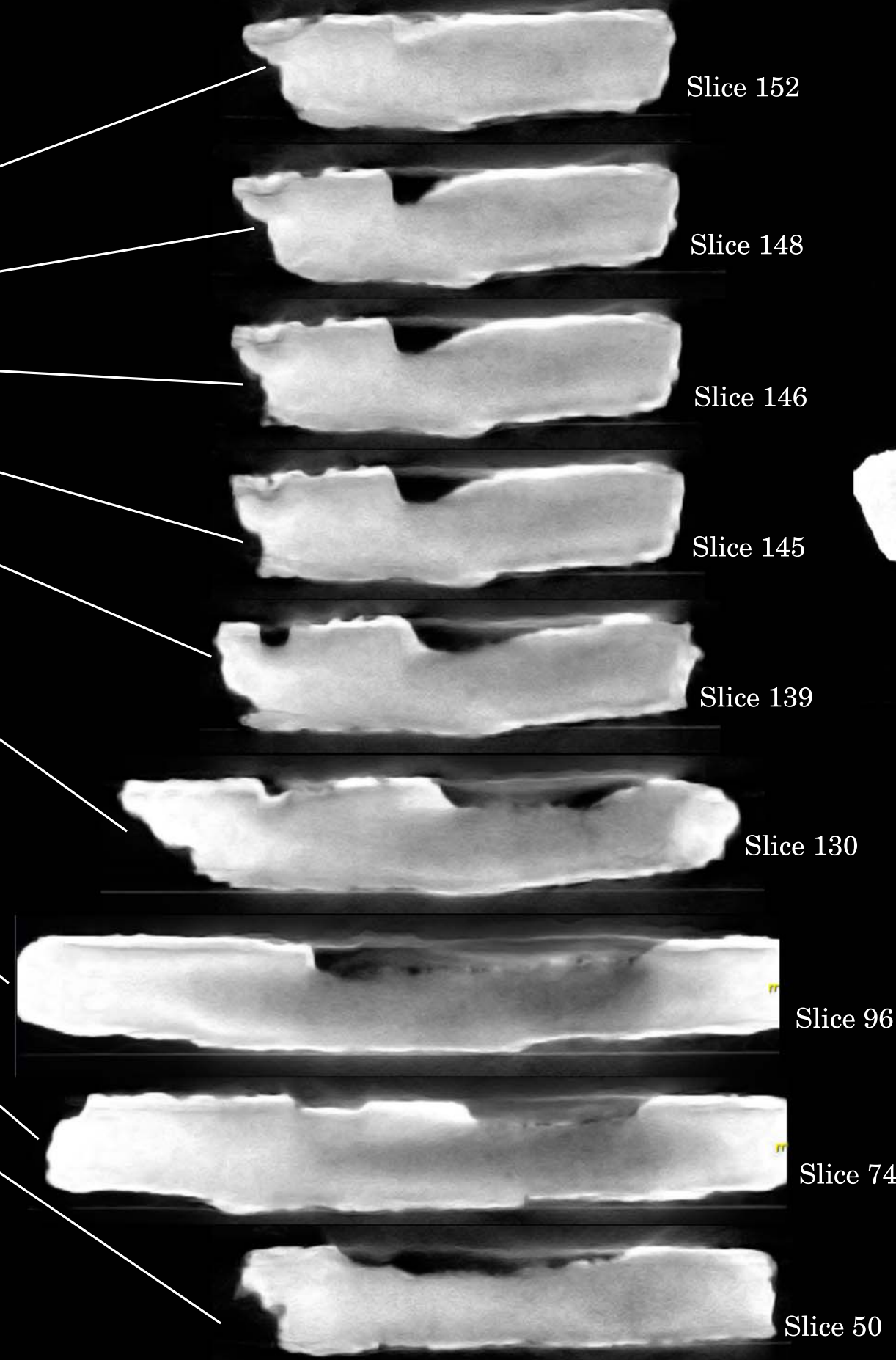
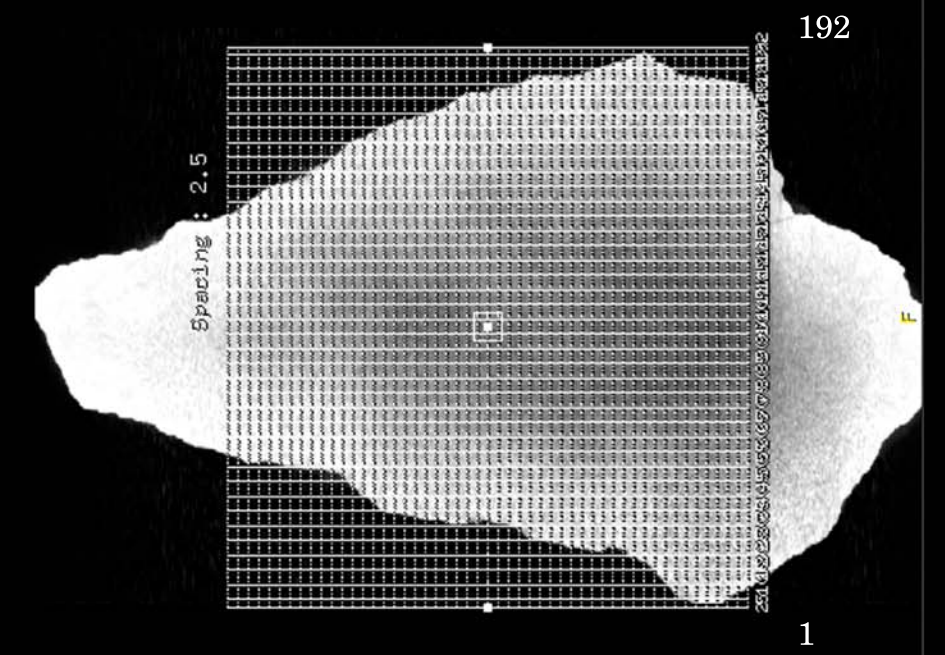


**Alvis Delk Print
in the Sir George Series**

Photo: David Lines, Creation Evidence Museum



Selected CT Scan Images



Lighter shades in the scan images indicate the highest-density (more concentrated) rock. Varying shades of gray indicate variations in the density.

Because mud is a fluid, the pressure of a foot displaces the mud in a complex pattern. This introduces uneven pressures, and leaves areas of uneven density.

Relatively undisturbed mud at the ends of the rock exhibit a uniform light-gray color.